

Drawing Number
TAR0849-01-ARB-A03

Description
REAR TOTEM

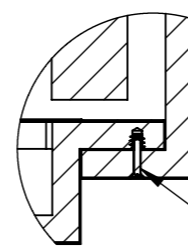
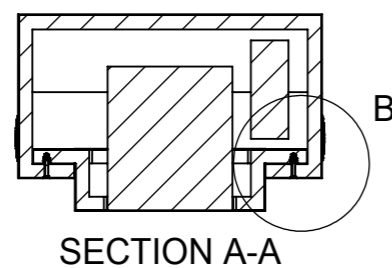
Weight

Date
06 July 2022 10:00:58

Drawn By
DB

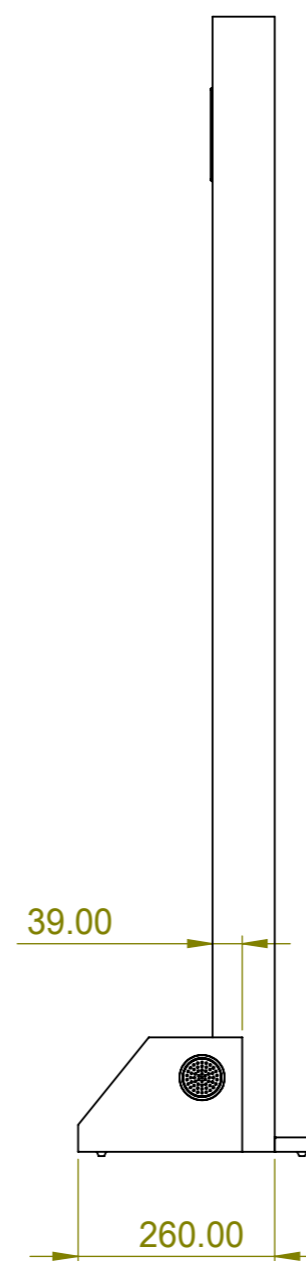
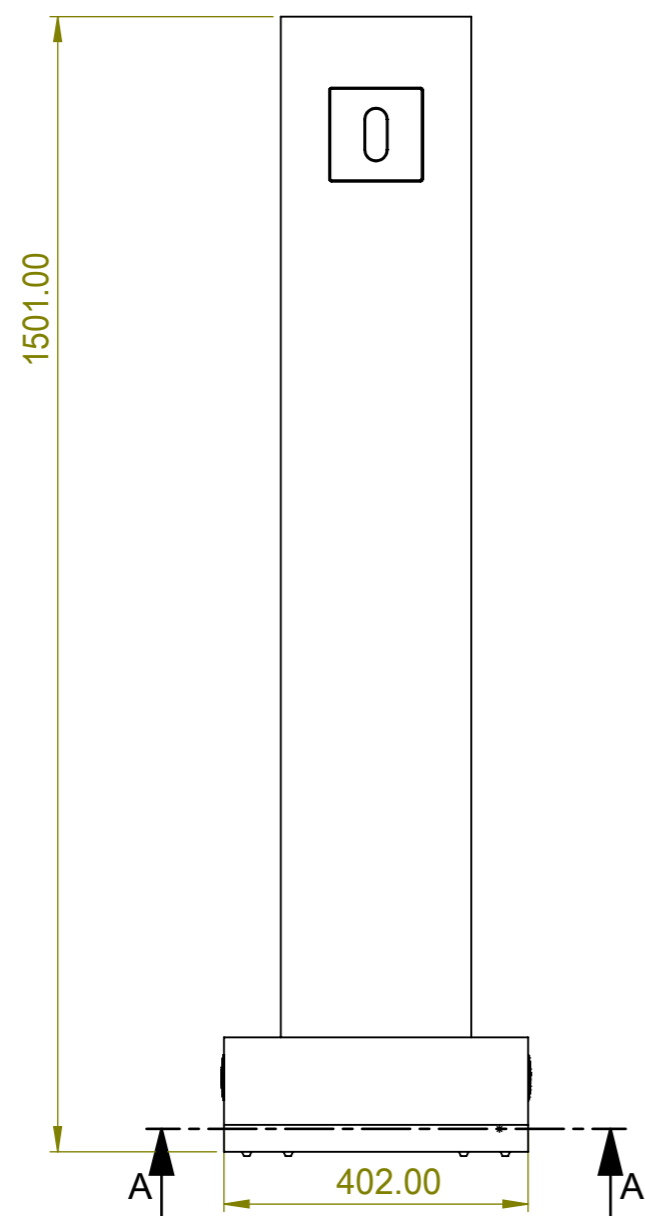
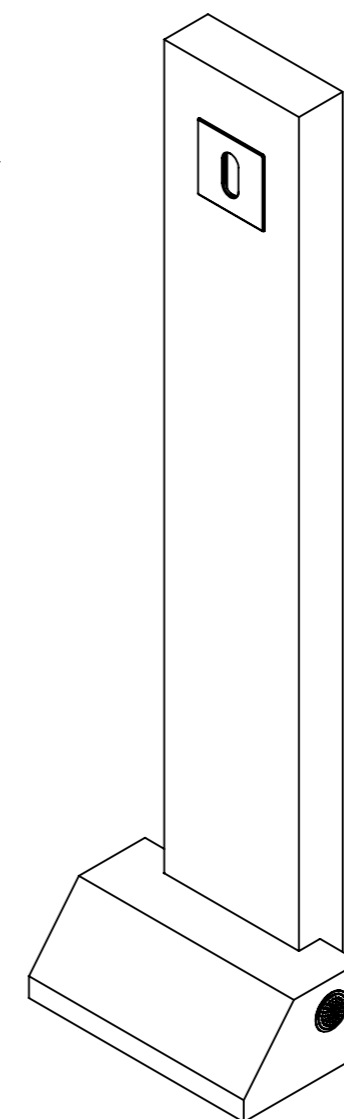
Sheet Scale
1:10 (UNLESS OTHERWISE SPECIFIED)
DO NOT SCALE OFF DRAWING

SHEET 1 OF 2



DETAIL B
SCALE 1 : 5

MECHANICALLY
FASTEN



NOTES

THIS DRAWING IS THE PROPERTY OF PMIM S.A. DISPLAY INTERNATIONAL AND IS PROTECTED BY DOMESTIC AND INTERNATIONAL LAW. IT MAY NOT BE DISTRIBUTED OR USED IN ANY FORM WITHOUT EXPLICITLY WRITTEN PERMISSION.

UNLESS OTHERWISE SPECIFIED: DIMENSIONS ARE IN MILLIMETERS

WELD SPECIFICATION:
ALL WELDS MIG UNLESS STATED
ALWAYS REMOVE BURRS AND SHARP CORNERS
RESISTANCE WELDING WIRE TO WIRE THE SET SHOULD BE 20% UNLESS STATED

FINISH SPECIFICATIONS:

POWDERCOATING: BETWEEN 80 - 120 MICRON THICKNESS COVERAGE

CHROME PLATING: NICKEL LAYER = 8 - 12 MICRON. CHROMIUM LAYER = 0.1 - 0.3 MICRON THICKNESS. TRIVALENT CHROME ONLY. CHROME PLATING POLISHING SPECIFICATION IS 400 GRIT FINAL POLISH.

BRIGHT ZINC PLATING: 13 - 15 MICRON THICKNESS.

WOOD PRODUCTS:
WHERE SPECIFIED, ALL WOOD-BASED PRODUCT MUST BE FSC CERTIFIED

GENERAL TOLERANCES:

ANGLES +/-1.0 DEGREE
OVER 2000MM UP TO 4000MM +/-2.0MM
OVER 1000MM UP TO 2000MM +/-1.5MM
OVER 120MM UP TO 1000MM +/-1.0MM
LINEAR DIMENSIONS UP TO 120MM +/-0.5MM

REVISION

(E)

ITEM NO.	JOB NUMBER	UNIT	PART/ASS NUMBER	DESCRIPTION	MATERIAL	FINISH	REV	QTY.
1	TAR0849-01	ARB	A02	BASE FOOT			A	1
2	TAR0849-01	ARB	A05	REAR TOTEM			E	1
3			SOCKETHEAD C/S	M4 x 25mm				2
4				FOSSEWAY	PD2126			4

Drawing Number
TAR0849-01-ARB-A03

Description
REAR TOTEM

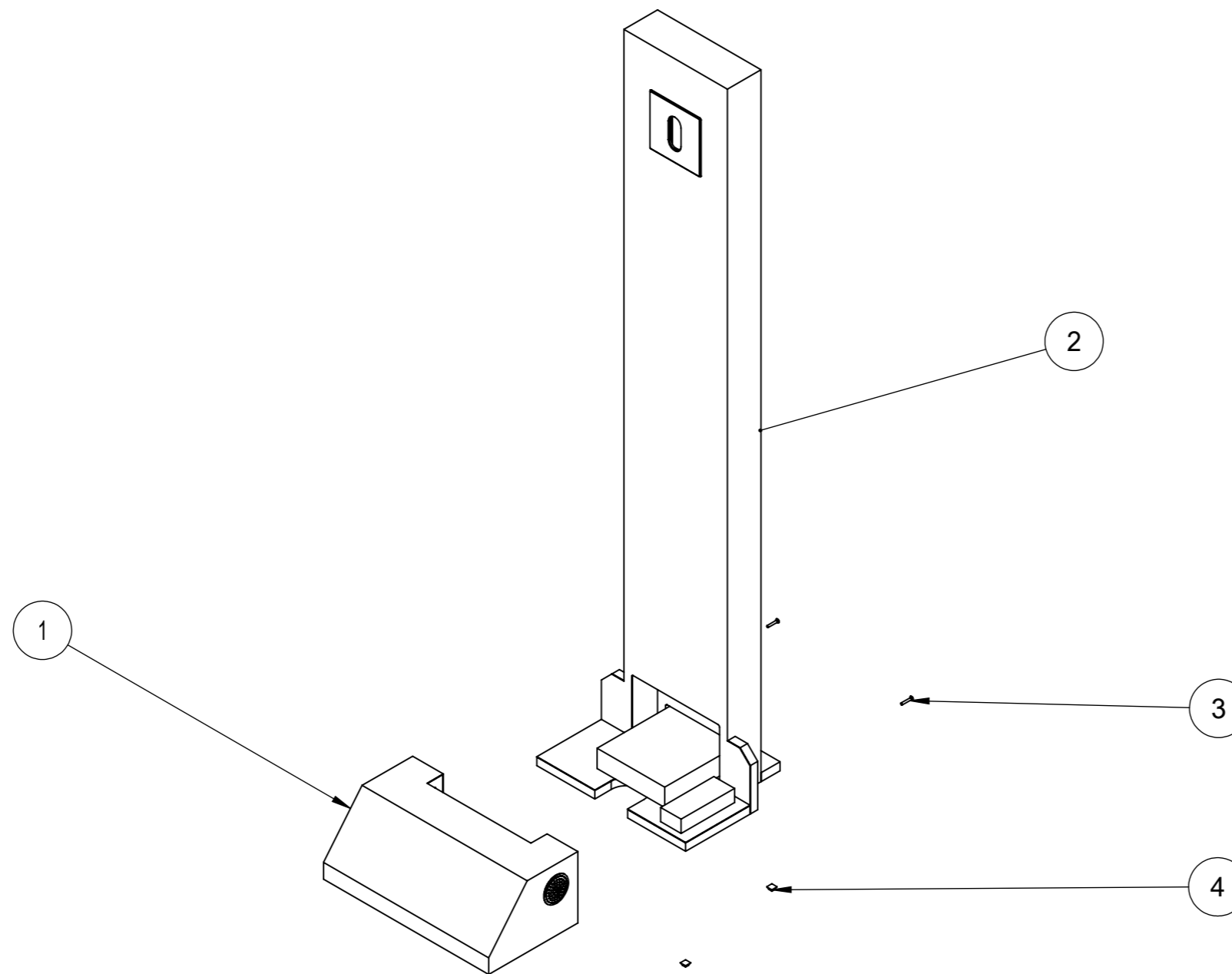
Weight

Date
06 July 2022 10:00:58

Drawn By
DB

Sheet Scale
1:10 (UNLESS OTHERWISE SPECIFIED)
DO NOT SCALE OFF DRAWING

SHEET 2 OF 2



NOTES

THIS DRAWING IS THE PROPERTY OF PMIM S.A. DISPLAY INTERNATIONAL AND IS PROTECTED BY DOMESTIC AND INTERNATIONAL LAW. IT MAY NOT BE DISTRIBUTED OR USED IN ANY FORM WITHOUT EXPLICITLY WRITTEN PERMISSION.

UNLESS OTHERWISE SPECIFIED: DIMENSIONS ARE IN MILLIMETERS

WELD SPECIFICATION:
ALL WELDS MIG UNLESS STATED
ALWAYS REMOVE BURRS AND SHARP CORNERS
RESISTANCE WELDING WIRE TO WIRE THE SET SHOULD BE 20% UNLESS STATED

FINISH SPECIFICATIONS:

POWDERCOATING: BETWEEN 80 - 120 MICRON THICKNESS COVERAGE

CHROME PLATING: NICKEL LAYER = 8 - 12 MICRON. CHROMIUM LAYER = 0.1 - 0.3 MICRON THICKNESS. TRIVALENT CHROME ONLY. CHROME PLATING POLISHING SPECIFICATION IS 400 GRIT FINAL POLISH.

BRIGHT ZINC PLATING: 13 - 15 MICRON THICKNESS.

WOOD PRODUCTS:
WHERE SPECIFIED, ALL WOOD-BASED PRODUCT MUST BE FSC CERTIFIED

GENERAL TOLERANCES:

ANGLES +/-1.0 DEGREE
OVER 2000MM UP TO 4000MM +/-2.0MM
OVER 1000MM UP TO 2000MM +/-1.5MM
OVER 120MM UP TO 1000MM +/-1.0MM
LINEAR DIMENSIONS UP TO 120MM +/-0.5MM

REVISION

E